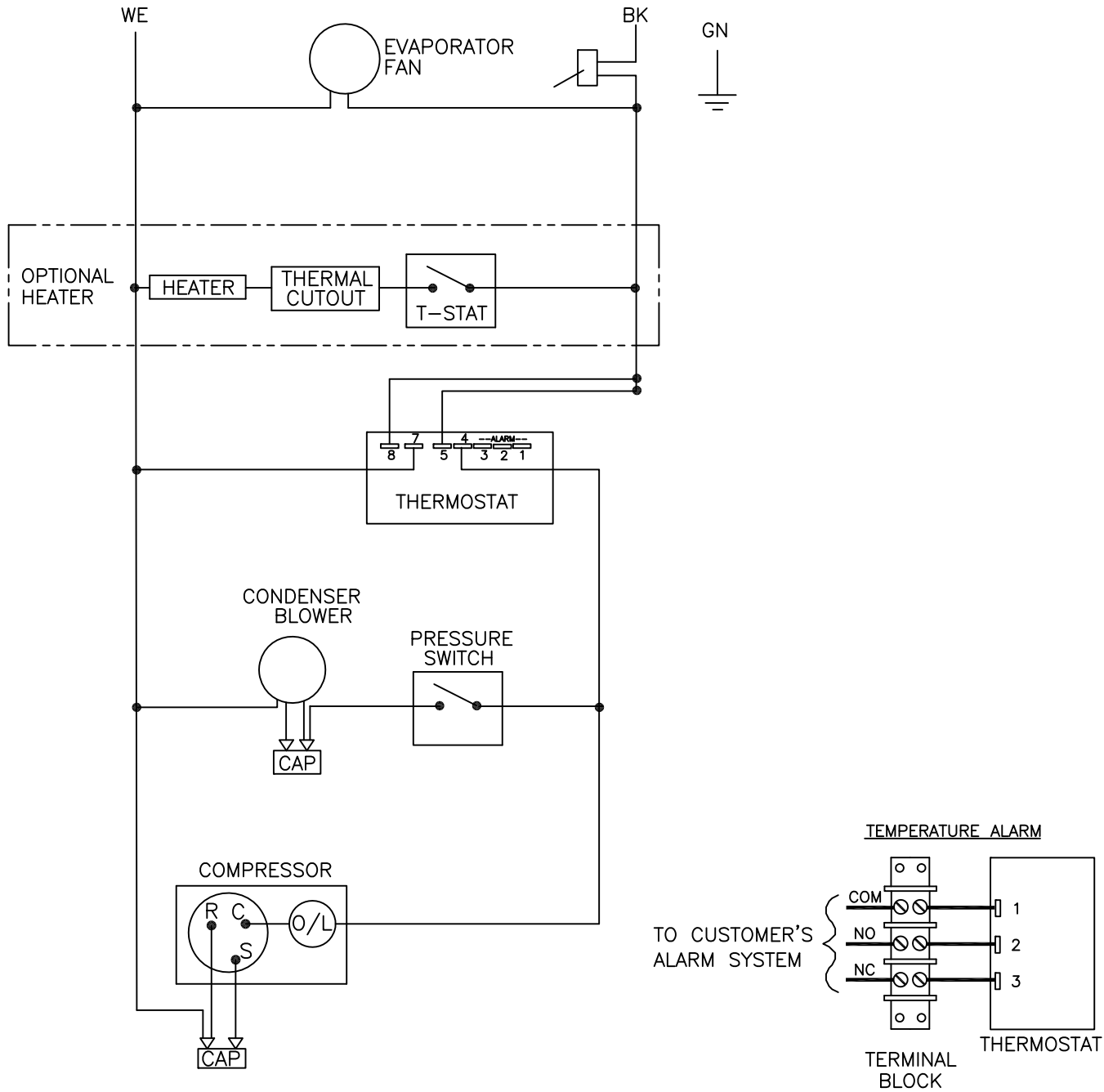


THIS DOCUMENT IS THE PROPERTY OF KOOLTRONIC, INC. AND CONTAINS PROPRIETARY AND CONFIDENTIAL INFORMATION WHICH MUST NOT BE DUPLICATED, USED OR DISCLOSED TO OTHERS, EXCEPT AS EXPRESSLY AUTHORIZED IN WRITING BY KOOLTRONIC, INC.

REVISIONS				
SYM	NOTICE	DESCRIPTION	DATE	APPROVED
-	ER 18/012	NEW DRAWING RELEASE	1/3/19	SS/SDS



ALL DIMENSIONS ARE IN INCHES,
DIMENSIONS DESIGNATED MM ARE IN MILLIMETERS.

UNLESS OTHERWISE SPECIFIED TOLERANCES NON-ACCUMULATIVE		
TOL. ON	INCHES	MM
.XX	± .02	±
.XXX	± .010	±
ANGULAR		± 1/2°
MATERIAL		
UNITS HL28 3K 115V & 230V		

DRAWN	DATE
SEPEHR SABETI	1/3/19
CHECKED	
Steve Schmierer	1/4/19
ENG.	
SEPEHR SABETI	1/3/19
MFG. ENG.	
APPROVED	
Bruce Kreeley	1/16/19

HOPEWELL, NJ VENTURA, CA USA

WIRING DIAGRAM			
CODE IDENT. NO.	SIZE	DWG. NO.	REV
06223	A	WD-1651	-
SCALE	CAD. REF.	SHEET	
N/A	WD-XXX	1 OF 1	