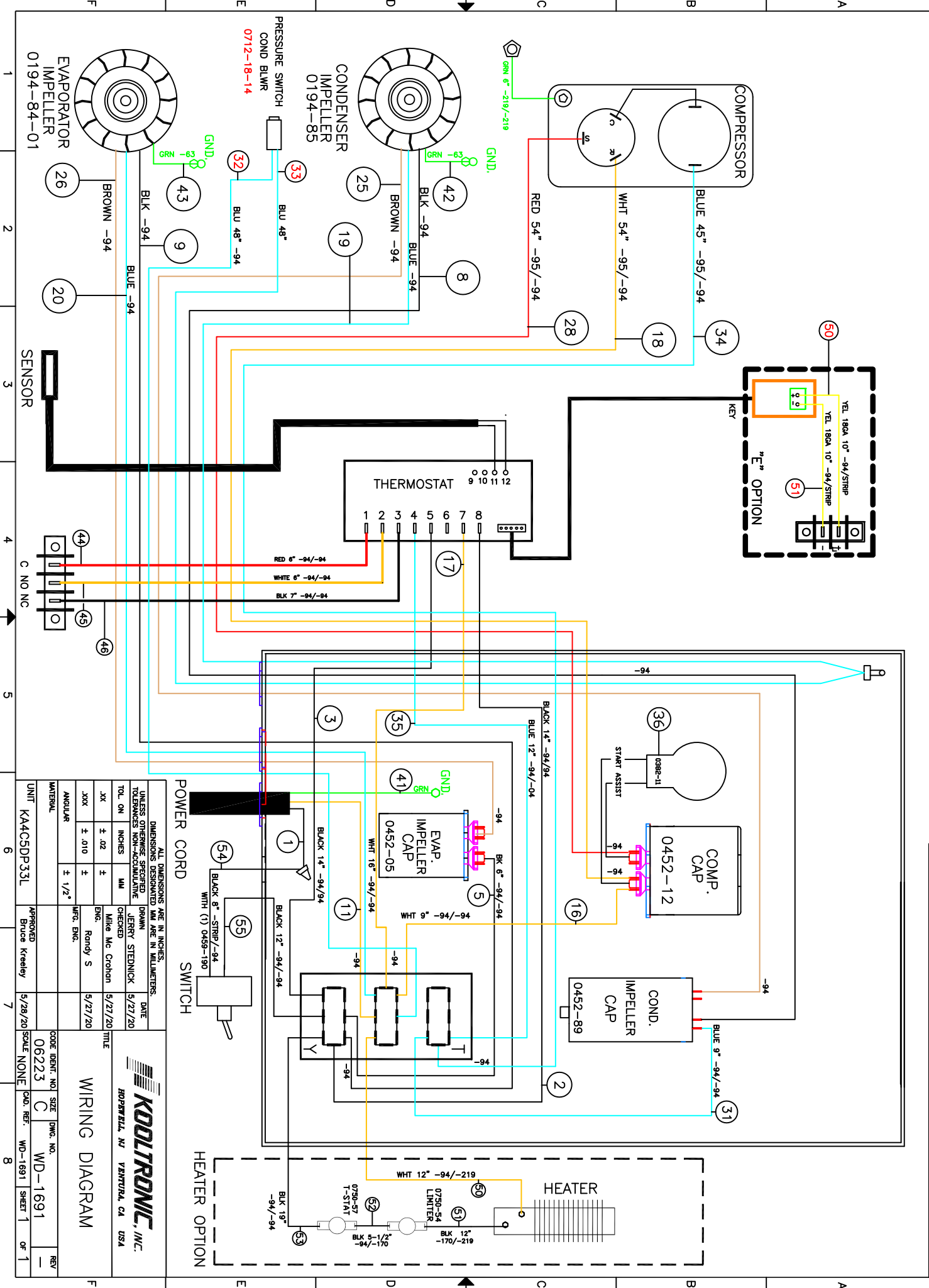


THIS DOCUMENT IS THE PROPERTY OF KOOLTRONIC, INC. AND CONTAINS PROPRIETARY AND CONFIDENTIAL INFORMATION WHICH MUST NOT BE DUPLICATED, USED OR DISCLOSED OTHER THAN AS EXPRESSLY AUTHORIZED BY KOOLTRONIC, INC.



REV	DATE	APPROVED	DESCRIPTION	REVISIONS
1	5/27/20	JSM	NEW DRAWING RELEASE	EC 20/139

<p>ALL DIMENSIONS ARE IN INCHES. DIMENSIONS DESIGNATED MM ARE IN MILLIMETERS. UNLESS OTHERWISE SPECIFIED DRAWN BY JERRY STEDNICK 5/27/20 CHECKED BY Mike Mc Crohan 5/27/20</p>	
TOL. ON INCHES	± .02
TOL. ON MILLIMETERS	± .10
ANGULAR	± 1/2°
UNIT	KA4C5DP33L
APPROVED	Bruce Kreeley
SCALE	NONE
DATE	5/28/20
REV	06223
WDG. NO.	WD-1691
CD. REF.	WD-1691
SHEET	1 OF 1

KOOLTRONIC, INC.
 HOPWELL, NJ VENTURA, CA USA

WIRING DIAGRAM