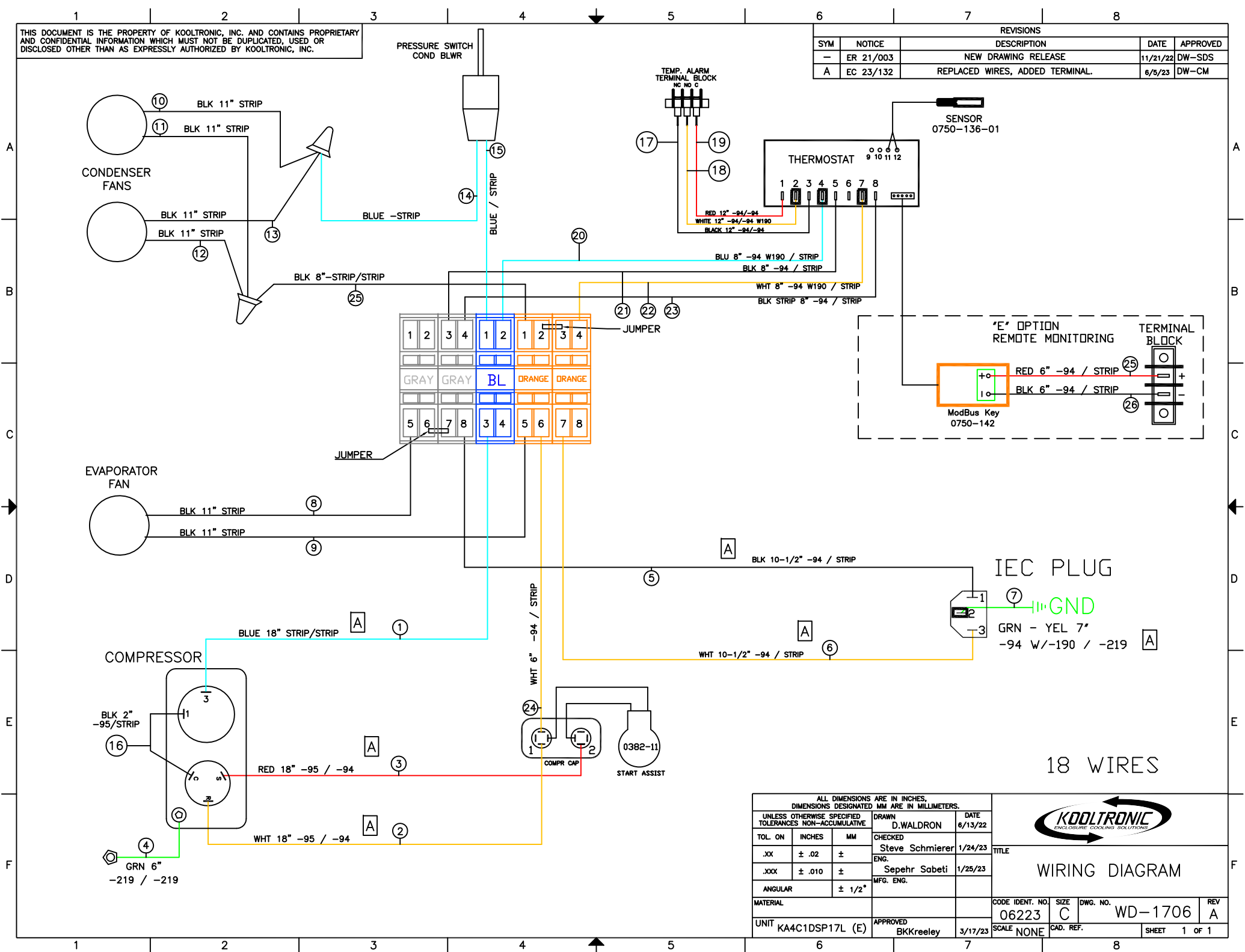


THIS DOCUMENT IS THE PROPERTY OF KOOLTRONIC, INC. AND CONTAINS PROPRIETARY AND CONFIDENTIAL INFORMATION WHICH MUST NOT BE DUPLICATED, USED OR DISCLOSED OTHER THAN AS EXPRESSLY AUTHORIZED BY KOOLTRONIC, INC.

REVISIONS				
SYM	NOTICE	DESCRIPTION	DATE	APPROVED
-	ER 21/003	NEW DRAWING RELEASE	11/21/22	DW-SDS
A	EC 23/132	REPLACED WIRES, ADDED TERMINAL.	6/5/23	DW-CM



18 WIRES

ALL DIMENSIONS ARE IN INCHES, DIMENSIONS DESIGNATED MM ARE IN MILLIMETERS.				DRAWN D. WALDRON		DATE 6/13/22	
UNLESS OTHERWISE SPECIFIED TOLERANCES NON-ACCUMULATIVE				CHECKED Steve Schmierer		DATE 1/24/23	
TOL. ON	INCHES	MM	ENG.		MFG. ENG.		TITLE
.XX	± .02	±	Sepehr Sabeti		1/25/23		WIRING DIAGRAM
.XXX	± .010	±	MFG. ENG.				
ANGULAR ± 1/2°							
MATERIAL							
UNIT KA4C1DSP17L (E)				APPROVED BKKreeley		DATE 3/17/23	

CODE IDENT. NO. 06223	SIZE C	DWG. NO. WD-1706	REV A
SCALE NONE	CAD. REF.	SHEET 1 of 1	