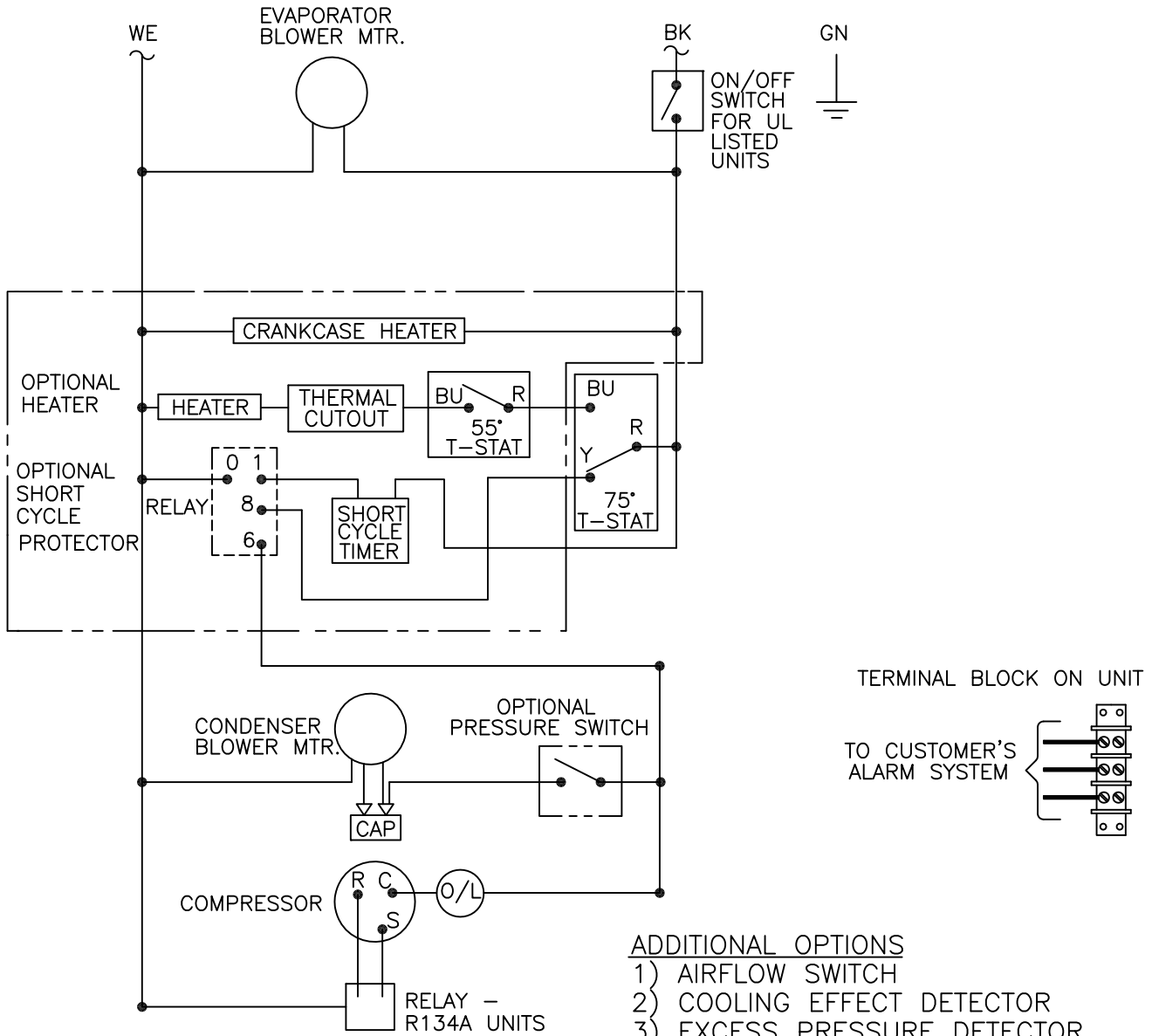


THIS DOCUMENT IS THE PROPERTY OF KOOLTRONIC, INC. AND CONTAINS PROPRIETARY AND CONFIDENTIAL INFORMATION WHICH MUST NOT BE DUPLICATED, USED OR DISCLOSED TO OTHERS, EXCEPT AS EXPRESSLY AUTHORIZED IN WRITING BY KOOLTRONIC, INC.

REVISIONS

SYM	NOTICE	DESCRIPTION	DATE	APPROVED
-	EC 98/249	NEW DRAWING RELEASE	12/4/98	SDS
A	EC 14/170	REMOVED SURGE SUPPRESSOR	8/25/14	LM/



ADDITIONAL OPTIONS

- 1) AIRFLOW SWITCH
- 2) COOLING EFFECT DETECTOR
- 3) EXCESS PRESSURE DETECTOR

NOTE:

- 1) ADDITIONAL OPTIONS ARE WIRED TO AN INDIVIDUAL 3 POSITION TERMINAL BLOCK AS SHOWN ABOVE.

ALL DIMENSIONS ARE IN INCHES, DIMENSIONS DESIGNATED MM ARE IN MILLIMETERS.

UNLESS OTHERWISE SPECIFIED TOLERANCES NON-ACCUMULATIVE

TOL. ON	INCHES	MM
.XX	± .02	±
.XXX	± .010	±
ANGULAR		± 1/2°

DRAWN	DATE
R.D.MOORE	3/8/00
CHECKED	
Steve Schmierer	8/26/14
ENG.	
Joe Milko	8/26/14
MFG. ENG.	

MATERIAL
UNITS
KA4C1.5-4.2H9, H10L

APPROVED	DATE
Joe Milko	8/26/14



WIRING DIAGRAM

CODE IDENT. NO.	SIZE	DWG. NO.	REV
06223	A	WD-442	A
SCALE	CAD. REF.	SHEET	1 OF 1
7/8=1	WD-564		