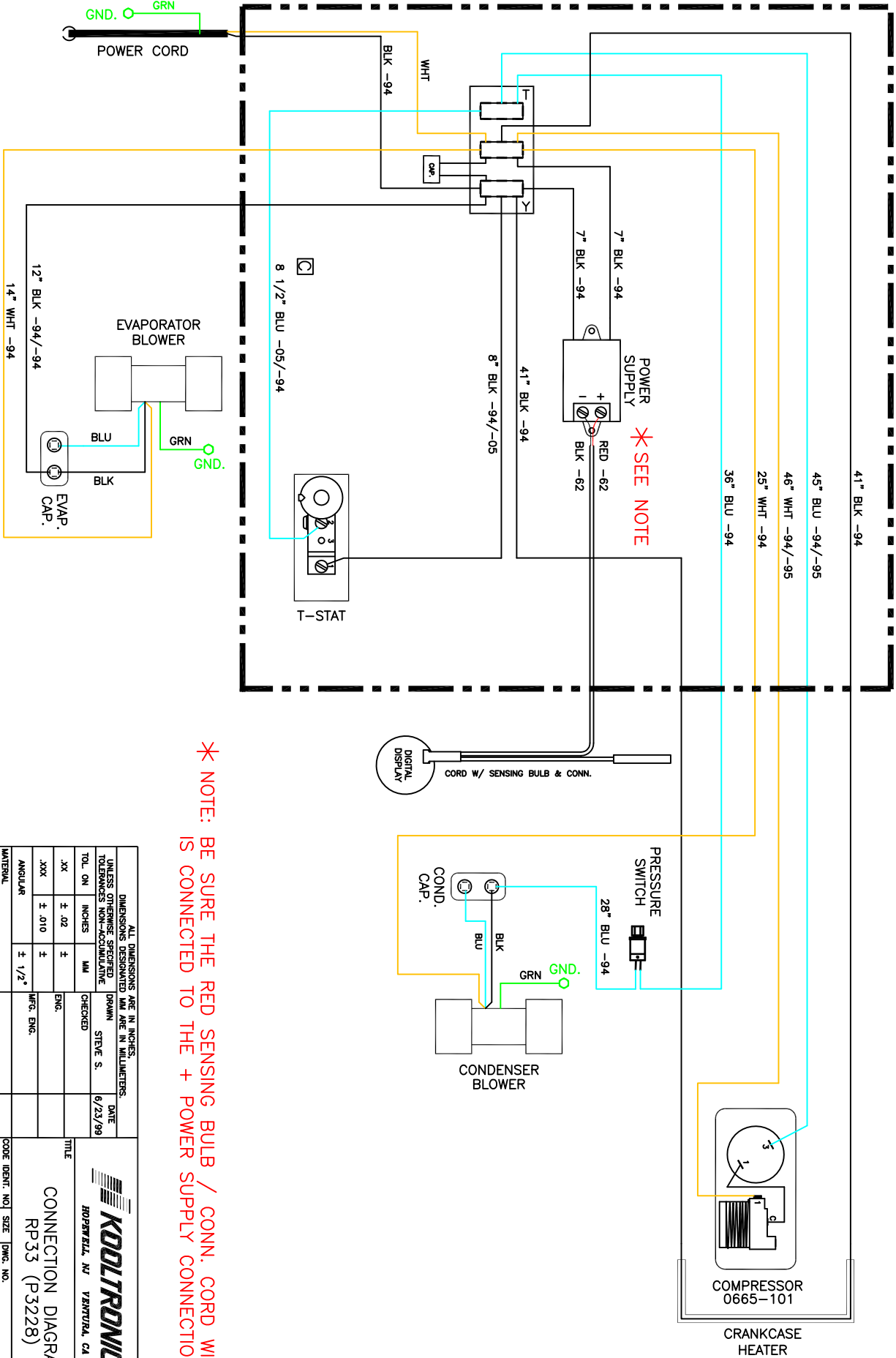


REV	DESCRIPTION	DATE	APPROVED
1	NEW DRAWING	6/23/99	
2	ADDED WIRE LENGTHS AND THERMOMETER ASSY.	10/6/99	RL
3	CHG. COMP. BLK & T-STAT "2" WIRES TO BLUE	3/2/00	RL
4	8 1/2" BLUE WIRE WAS 8"	2/9/06	SOS
5	CHANGED PRESSURE SWITCH WIRE LENGTHS. WAS 27" & 34" 9/18/18	9/18/18	JS/SDS



*** NOTE: BE SURE THE RED SENSING BULB / CONN. CORD WIRE IS CONNECTED TO THE + POWER SUPPLY CONNECTION.**

DIMENSIONS ARE IN INCHES, UNLESS OTHERWISE SPECIFIED		TOLERANCES NON-ACCUMULATIVE		DRAWN		DATE	
TOL. ON	INCHES	MM	CHECKED	STEVE S.	6/23/99		
XX	± .02	±	ENG.				
XXX	± .010	±	MFG. ENG.				
ANGULAR	± 1/2°						
MATERIAL							
UNIT	RP33 (P3228)		APPROVED				
TITLE				CODE IDENT. NO.			
CONNECTION DIAGRAM				06223			
RP33 (P3228)				SIZE			
				WD-512			
				DWG. NO.			
				WD-512			
				SCALE			
				NONE			
				SHEET			
				1 OF 2			
				REV			
				D			

KOOLTRONIC, INC.
 HOPEWELL, NJ VENTURA, CA USA

