

PROFILE SERIES DP17 PANEL-MOUNT AIR-COOLED AIR CONDITIONER

TECHNICAL DATA

Model	NEMA Rating	UL/CUL Listed or Recognized	BTU/H Capacity	95/95 Rating BTU/H	Ambient Temp		Volts	Hz	Running Amps	Approx. Weight	
					°F	°C				lbs	kg
KA4C2DP17L	3R & 12	Listed	2000	1500	131/-20	55/-28	115/100	60/50	4.0	38	18

115V 60 Hz models perform at reduced capacity when operated at 100V 50 Hz.
Rating shown is for operation at maximum ambient temperature.

STANDARD FEATURES

Baked Powder Finish
Built-in Condensate Evaporator
CFC-Free Refrigerant
Closed-Loop Cooling
Compressor Short Cycle Protector
Epoxy-Coated Condenser Coil
Heavy-duty Steel Shell
Mounts Internally or Externally
NEMA 12 & 3R Ratings Maintained (UL50)
Programmable Temperature Alarm
Programmable Thermostat
Six-Foot [1.8m] (minimum) 3-Wire Power Cord
UL/CUL Listed

ACCESSORIES AND OPTIONS

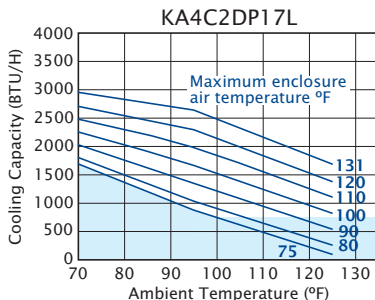
Adapter
Enclosure Heater
Filter
Filter Recoating Adhesive
Internal Corrosion Protection
Remote Monitoring
Remote Thermostat Relay
Replacement Filters
Special materials or finishes
Special motors, line cords or connectors
Stainless Steel Shell



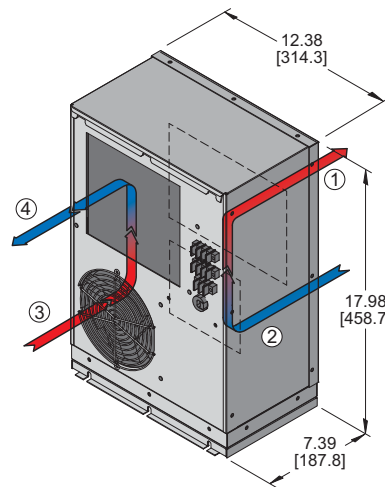
NEMA
TYPE 12 & 3R
MAINTAINED



PERFORMANCE



Operation within shaded area not recommended.

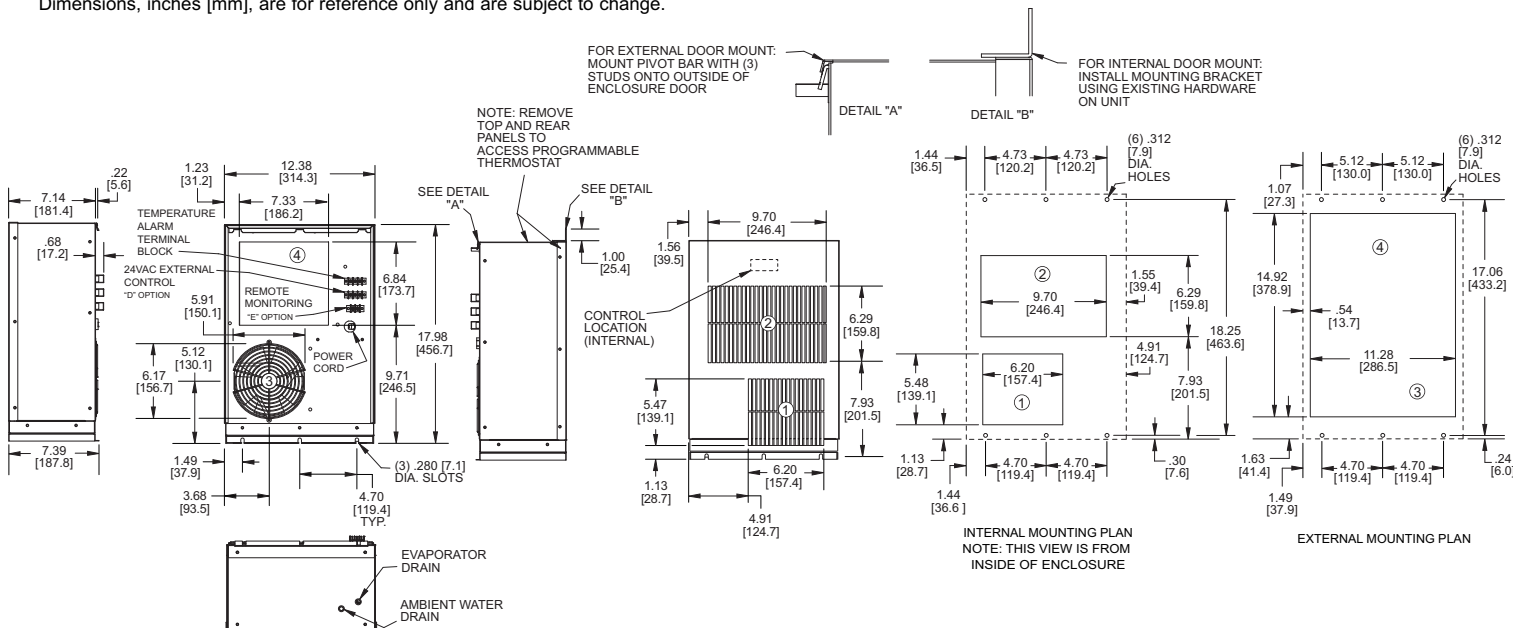


- ① CONDENSER AIR INLET (Ambient Air In)
- ② CONDENSER OUTLET (Warm Ambient Air Out)
- ③ WARM AIR RETURN FROM ENCLOSURE
- ④ COOL AIR OUTLET TO ENCLOSURE

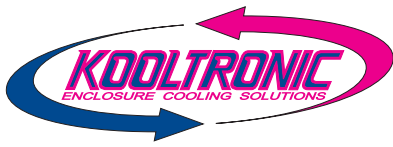
DRAWINGS

Many popular units are available as 3D solid models for customer system integration. Please contact Kooltronic for details.

Dimensions, inches [mm], are for reference only and are subject to change.



dp17.qxd (11/20/20) (CDR: 20293)



DESCRIPTION

The **Profile Series** Air Conditioners are designed specifically for cooling electronic enclosures and can be used for both indoor and outdoor applications. Engineered to be mounted either outside or inside of an enclosure, the **Profile Series** Air Conditioners are the first Kooltronic models to offer this degree of flexibility.

The narrow depth of the **Profile Series** allows the option of internal mounting, making the units virtually tamper-proof. The features engineered into all of the **Profile Series** models make them a tamper-resistant choice for external applications. Combined with a NEMA 12 & 3R Rating, with all models UL/CUL Listed, the **Profile Series** is an excellent choice for telecommunications or other outdoor cabinet applications.

FEATURES AND BENEFITS (STANDARD)

All models UL/CUL Listed, a standard of safety.

Built-in condensate evaporator eliminates the need for a drain (normal operation*).

CFC-free refrigerant provides a zero ozone depletion potential.

Closed-loop cooling provides stable temperature control while excluding dust and humidity from the electrical enclosure.

Mounts internally or externally for added versatility.

NEMA 12 & 3R ratings for compatibility with listed electrical enclosures.

Programmable thermostat capable of remote monitoring and control.

Programmable temperature alarm to alert if early action required.

Both evaporator and condenser coils are epoxy coated, prolonging unit life.

Two stage thermostat helps eliminate compressor cycling.

* May not be adequate in extremely high humidity with open or leaky enclosure. Overflow condensate drain fitting and hose are included.

FEATURES AND BENEFITS (OPTIONAL)*

Compressor short cycle protector extends compressor life. (Standard Feature on models with a Programmable Thermostat).

Enclosure heater eliminates damaging condensation, increasing reliability of electrical enclosure components.

Mounting adapter plates are offered to replace another manufacturer's unit.

Remote monitoring provides temperature data for warning of early action required. (Optional Feature on models with a Programmable Thermostat).

Remote thermostat relay for control by a user-supplied control system.

Stainless steel shell for corrosive environments.

Special paint finishes.

*Contact KOOLTRONIC for more information.

REPLACEMENT FILTERS

The DP17 optional filter Part No. 7007F (7.00" x 6.25" x 0.38" [177.8mm x 158.8mm x 9.7mm])

