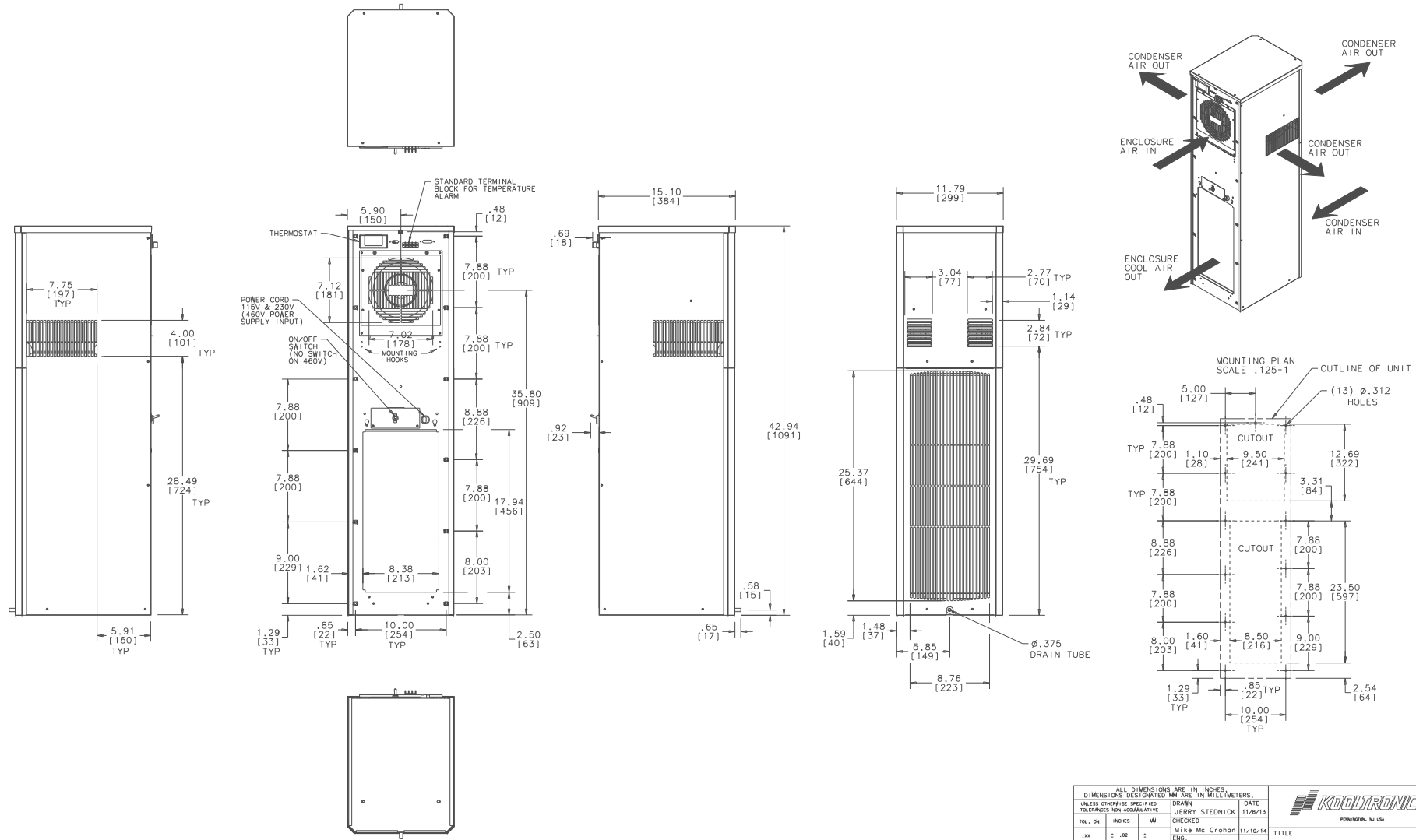



THIS DOCUMENT IS THE PROPERTY OF KOOLTRONIC, INC. AND CONTAINS PROPRIETARY AND CONFIDENTIAL INFORMATION WHICH MUST NOT BE DUPLICATED, USED OR DISCLOSED TO OTHERS, EXCEPT AS EXPRESSLY AUTHORIZED IN WRITING BY KOOLTRONIC, INC.

REVISIONS		DATE	APPROVED
SYM	NOTICE		
-	ER 13/045	11/16/14	JS
DESCRIPTION			
NEW DRAWING RELEASE			



ALL DIMENSIONS ARE IN INCHES. DIMENSIONS DESIGNATED MM ARE IN MILLIMETERS.				UNLESS OTHERWISE SPECIFIED TOLERANCES ARE NON-ACCUMULATIVE.		DRAWN: JEREMY STEDNICK 11/8/13		DATE: 11/16/14	
TOL. ON	INCHES	MM	CHECKED	DATE					
.xx	± .02	±	Mike Mc Crahan	11/16/14					
.xxx	± .010	±	Jim Distler	11/13/14					
ANGULAR	± 1/2	°	MFG. ENG.						
MATERIAL				CODE IDENT. NO.   SIZE   DWG. NO.		REV			
UNIT K_NA4C11SP43L				APPROVED Joe M/Bruce K 11/13/14		06223 D		GA202543A	
				SCAL. 1/875=1		CAD. REF.		SHEET 1 of 1	