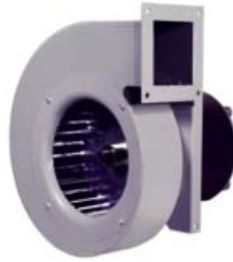


KOOLTRONIC BASIC BLOWER QUICK SHEET



Single Centrifugal - Available in seven sizes and capacities, (from 60 to 425 CFM) these popular blowers are designed for performance against low to moderate static pressures. Easily installed, they can be mounted in any orientation for maximum cooling efficiency. A low cost alternative for a multitude of applications, these blowers are the workhorses of electronics cooling, and are used widely in other non-electronic applications.



High Pressure Centrifugal - These blowers fill the range between Single Centrifugal and High Pressure Radial Blowers. They are designed for higher airflow against lower static pressure. Available in a variety of sizes and output capacities, they satisfy a number of airflow/static pressure requirements. With capacities from 160 to 475 CFM, these blowers are designed for full performance in any mounting position.



High Pressure Radial - These blowers were designed to move moderate volumes of air against substantial static pressure. They are offered in a range of sizes, with capacities, from 55 to 265 CFM. Suitable applications include cooling computer disk drives and densely-packed enclosures, pollution sampling equipment and chromatography.



Double Centrifugal - Like the single blowers, these units are easily installed and operate effectively in any mounting orientation, but double blowers provide greater airflow than single units. Eleven models are offered, in a range of sizes and capacities (155 to 1200 CFM) to fill a variety of cooling requirements. Single and double centrifugal blowers are the backbone of forced convection air cooling.



Quadruplex Centrifugal - With available capacities from 320 to 920 CFM, these blowers move air quietly, evenly and efficiently. Suitable wherever wide-band air movement is required, Quadruplex Blowers are used for cooling printed circuit boards and other components in densely packed electronics cabinets. A unique motor mount design makes for smooth, quiet operation with minimum vibration.



AC Motorized Impeller Blowers - These blowers are designed for applications requiring high airflow in high static pressure conditions, where space for a blower is limited. Available in 115 and 230 VAC, 50/60 Hz., capacities range from 180 to 1295 CFM. (Special units are available up to 7,000 CFM. Call Kooltronic for details). Unique designs are available to meet special requirements.



DC Motorized Impeller Blowers - These blowers are available in 24 and 48 Volt DC, have reverse polarity and locked rotor protection. CFM output ranges from 294 to 635 CFM. They are designed for applications requiring high airflow in high static pressure conditions, where space for a blower is limited. They adapt to a wide range of applications, and unique packaging is available to meet special requirements.



Custom-made Blowers - Modifications to inlets or outlets, special mounting flanges, brackets, supports or other sheet metal changes are available to meet your specific application. In addition, Kooltronic also designs and manufactures a variety of blowers to meet your unique specifications. We invite your inquiries about our modifications and custom-designed capabilities.



Kooltronic Blowers are engineered for performance and built for reliability. They are available to meet a multitude of cooling or air handling needs. They may be mounted in any position required. These versatile blowers are used in virtually every type of cooling application in the electronic industries, as well as industrial, medical, telecommunication and food preparation applications.

FEATURES AND BENEFITS OF KOOLTRONIC, INC.



- Kooltronic-designed blowers are manufactured in the USA.
- Kooltronic has a 170,000 sq. ft. manufacturing and testing facility.
- 100% testing on all Kooltronic-designed products.
- Kooltronic's Quality System is ISO 9001: 2015 Certified.
- Environmental chamber and laboratory on site.
- Contract laboratory facilities for complete system analysis.
- Founded in 1956, Kooltronic is a privately owned company.
- Precision ball bearing motors.
- Painted units have baked powder finish.
- Full line of options for custom applications.
- Automated and custom paint booths.
- Custom design - prototype program.
- Kooltronic designs products using solid modeling software.

General Specifications for all Basic Blowers

Rugged Construction: Precision-engineered heavy-gauge steel construction on all painted units insures blowers stand up under tough applications.

Baked Powder Finish: Durable, baked-on powder finish is standard on all painted units. Custom finishes and colors available.

Precision Ball-Bearing Motors: All motors are UL/CSA Recognized and carry a Declaration of Conformity to applicable CE Standards. Designed for low temperature rise, Kooltronic motors are cooled by blowers' air intake for maximum motor life and include automatic-reset thermal overload protection. Special permanent lubricants perform over a broad temperature range: -20°F (-29°C) to 250°F (121°C). Consult Kooltronic for motors designed to meet unique applications or extreme environmental specifications.

Power: 115 VAC or 230 VAC, 50/60 Hz is standard. For multi-phase power, other voltages and frequencies or brushless DC applications, consult Kooltronic.

Leads: 12-inch [304.8mm] (minimum) power and ground leads. Special lengths and/or plugs available.



Scan with your smart phone
to visit kooltronic.com

For more information on our thermal
management products please visit:

kooltronic.com



Kooltronic Basic Blower Selection Guide

Blower Series	Low to Moderate Static Pressure	Moderate Static Pressure	High Static Pressure	Capacity CFM
Single Centrifugal	✓			60 - 425
High Pressure Centrifugal		✓		160 - 475
High Pressure Radial			✓	55 - 265
Double Centrifugal	✓			155 - 1,200
Quadruplex Centrifugal		✓		320 - 920
AC Motorized Impellers			✓	180 - 1,295*
DC Motorized Impellers**			✓	294 - 635

* Units are available up to 7,000 CFM. Contact Kooltronic for details.

** Available in 24 and 48 Volt DC. Units come with reverse polarity and locked rotor protection.



30 PENNINGTON-HOPEWELL ROAD PENNINGTON, NEW JERSEY 08534 ● TEL: 609-466-3400 ● FAX: 609-466-1114

