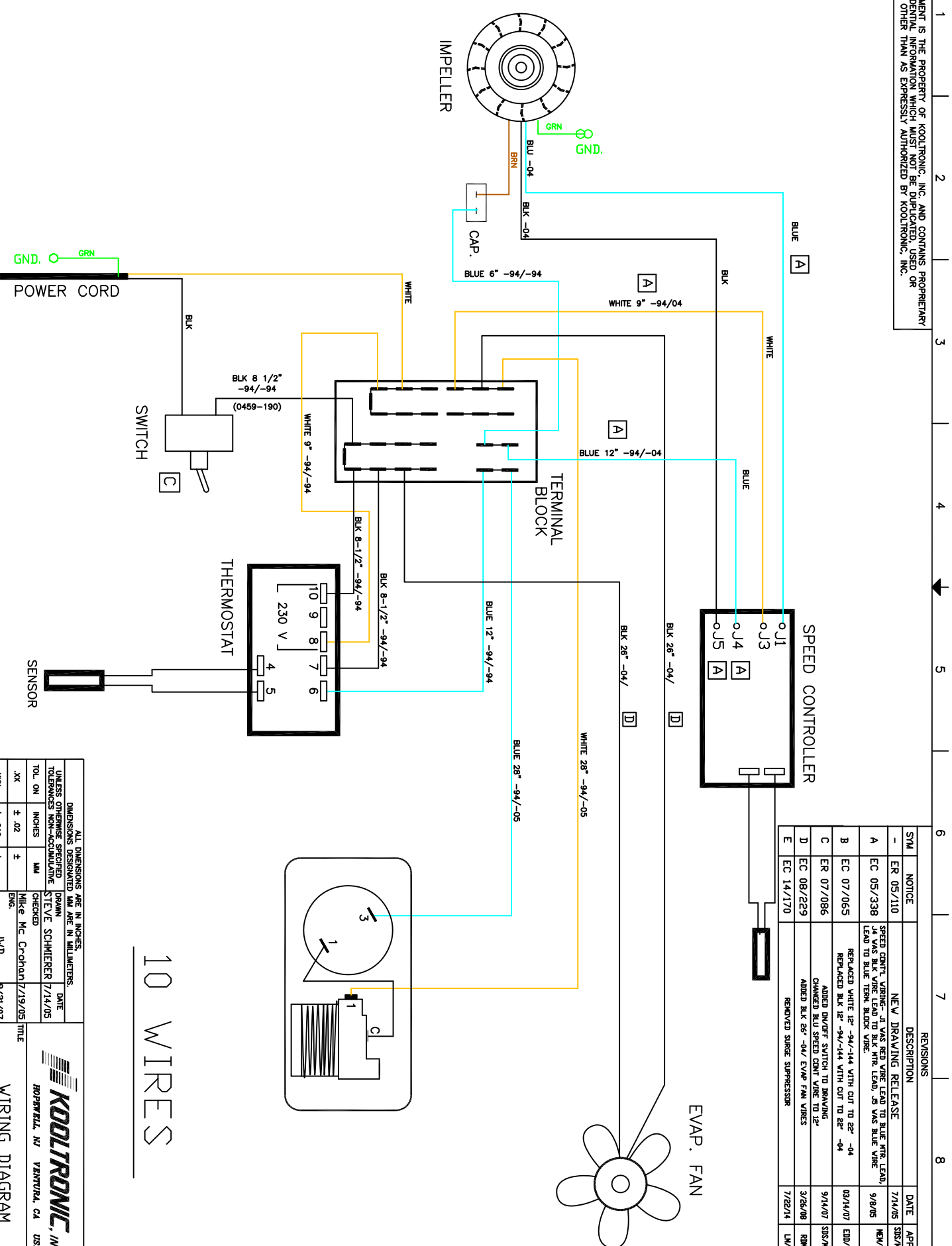


THIS DOCUMENT IS THE PROPERTY OF KOOLTRONIC, INC. AND CONTAINS PROPRIETARY AND CONFIDENTIAL INFORMATION WHICH MUST NOT BE DUPLICATED, USED OR DISCLOSED OTHER THAN AS EXPRESSLY AUTHORIZED BY KOOLTRONIC, INC.



10 WIRES

REV	DATE	APPROVED	DESCRIPTION
1	7/14/05	SSS/MEH	NEW DRAWING RELEASE
2	9/8/05	NEW	SPEED CONT'L WIRING-- J4 WAS RED WIRE LEAD TO BLUE WTR LEAD, J5 WAS BLK WIRE LEAD TO BLK WTR LEAD, J6 WAS BLUE WIRE LEAD TO BLUE TERM. BLOCK WIRE.
3	03/14/07	EDU/	REPLACED WHITE 12" -94/-144 WITH CUT TO 28" -04
4	9/14/07	SSS/MEH	ADDED INDUDEF. SWITCH TO BRANING
5	3/26/08	RM	CHANGED BLU SPEED SENS. WIRE THICK
6	7/22/14	LW/	ADDED BLK 28" -04/ EVAP FAN WIRES REMOVED SURGE SUPPRESSOR

DIMENSIONS ARE IN INCHES. UNLESS OTHERWISE SPECIFIED TOLERANCES NON-ACCUMULATIVE		DATE DRAWN CHECKED ENG.	
TOL. ON	INCHES	MM	DATE
.XX	± .02	±	9/21/07
.XXX	± .010	±	9/21/07
ANGULAR	± 1/2°		
MATERIAL UNIT KEM44C3P2L15		TITLE WIRING DIAGRAM AIR CONDITIONER	
APPROVED	SCALE	NO. SIZE	NO. NO.
BK	NONE	06223	WD-1076
9/24/07		CAD. REF.	WD-1076
		SHEET	1 OF 1

**KOOLTRONIC, INC.**  
 HOPKINSON, NJ VENTURA, CA USA