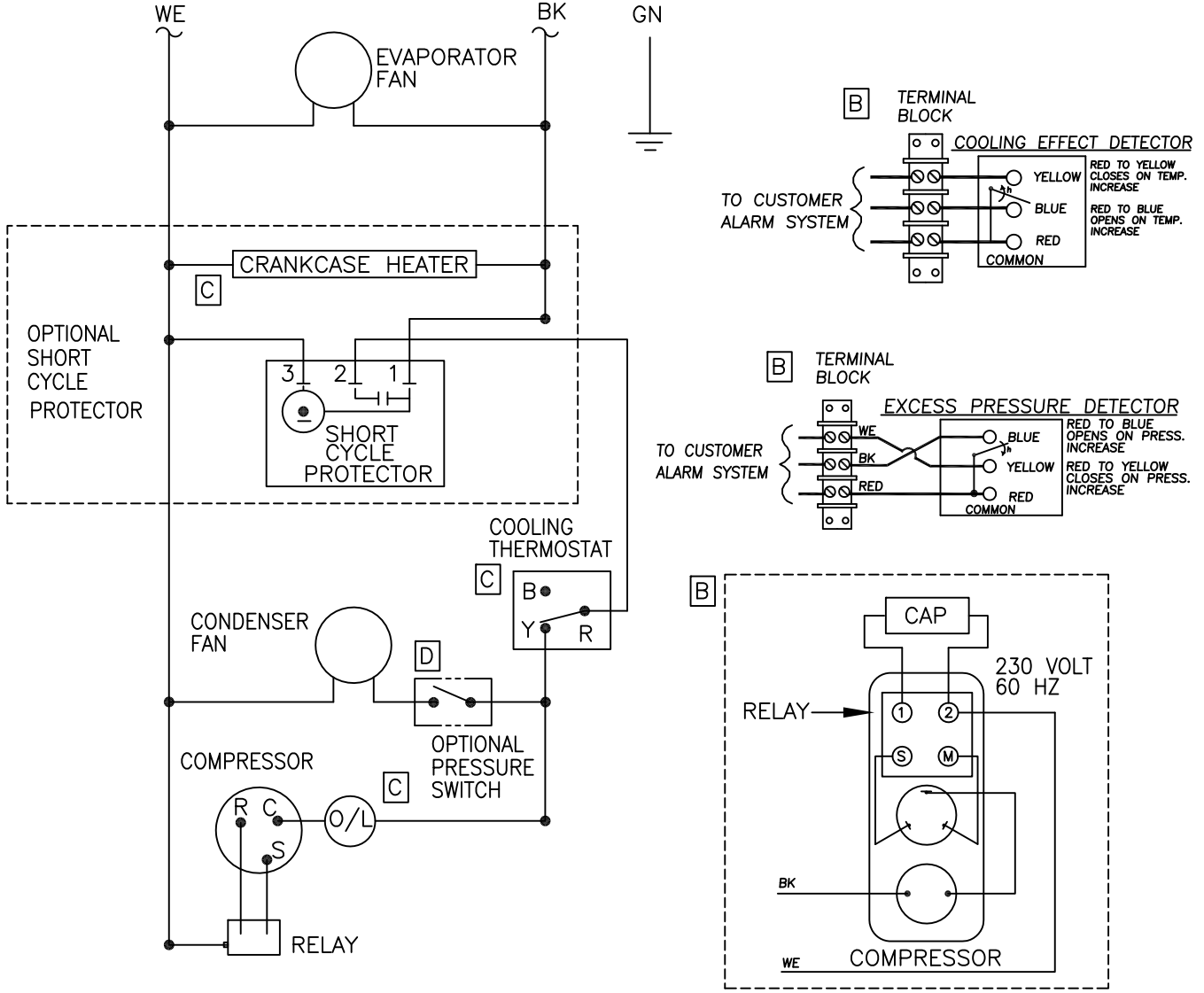



THIS DOCUMENT IS THE PROPERTY OF KOOLTRONIC, INC. AND CONTAINS PROPRIETARY AND CONFIDENTIAL INFORMATION WHICH MUST NOT BE DUPLICATED, USED OR DISCLOSED OTHER THAN AS EXPRESSLY AUTHORIZED BY KOOLTRONIC, INC.

REVISIONS				
SYM	NOTICE	DESCRIPTION	DATE	APPROVED
-	EC 92/307	NEW DRAWING RELEASE	11/10/92	MJH
A	ER 94/50	REVISED OPTION PICTORIALLY	3/17/94	MJH
B	ER 98/42	ADDED 230 VOLT DIAG. COOLING EFFECT DETECTOR. EXCESS PRESSURE DETECTOR	3/18/98	SDS
C	EC 98/97	ADDED OPTIONAL PRESSURE SWITCH AND CRANKCASE HEATER PICTORIALLY CHANGED THERMOSTAT	5/18/98	JMB
D	ER 98/241	MOVED LOC. OF PRESSURE SWITCH	11/18/98	SDS
E	EC 14/170	REMOVED SURGE SUPPRESSOR	5/21/14	LM/MEM/



UNLESS OTHERWISE SPECIFIED TOLERANCES NON-ACCUMULATIVE			DRAWN <i>MARTIN HIRCSHORN</i> DATE 11/10/92
TOL. ON	INCHES	MM	CHECKED Mike McCrohan 5/30/14
.XX	± .02	±	ENG. Joe Milko 6/2/14
.XXX	± .010	±	MFG. ENG.
ANGULAR		± 1/2°	
MATERIAL			
UNITS K_A4C_HS,KA4C_MMT K_A4C_HTT,KA4C_NP17,KA4C_NM			APPROVED Joe Milko 6/2/14



**KOOLTRONIC, INC.**  
HOPEWELL, NJ VENTURA, CA USA

## WIRING DIAGRAM

CODE IDENT. NO.	SIZE	DWG. NO.	REV
06223	A	WD-131	E
SCALE 7/8=1	CAD. REF.	WD000019	SHEET 1 OF 1