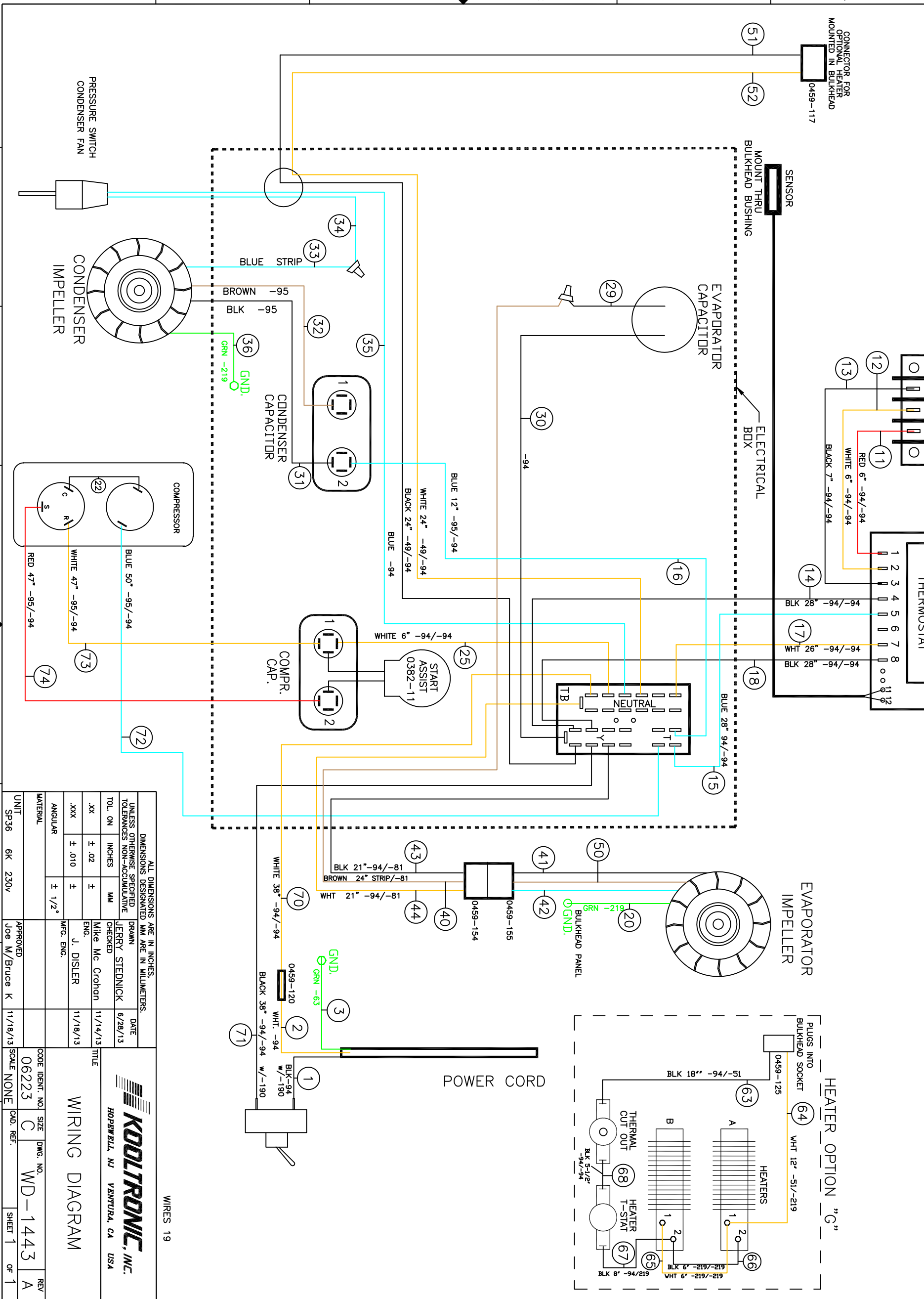


THIS DOCUMENT IS THE PROPERTY OF KOOLTRONIC, INC. AND CONTAINS PROPRIETARY AND CONFIDENTIAL INFORMATION WHICH MUST NOT BE DUPLICATED, USED OR DISCLOSED OTHER THAN AS EXPRESSLY AUTHORIZED BY KOOLTRONIC, INC.

NOTE: #2, #4 & #7 T-STAT TERMINALS GET 0459-190 TERM. HOUSING COVERS

REVISIONS		DATE	APPROVED
SYM	NOTICE		
-	ER 13/047	10/29/13	JS
A	EC 14/050	2/12/14	JS



WIRES 19

ALL DIMENSIONS ARE IN INCHES. DIMENSIONS DESIGNATED MM ARE IN MILLIMETERS. UNLESS OTHERWISE SPECIFIED TOLERANCES NON-ACCUMULATIVE

TOL. ON	INCHES	MM	DRAWN	DATE
.XX	± .02	±	JERRY STEDNICK	6/28/13
.XXX	± .010	±	Mike Mc Crohon	11/14/13
ANGULAR	± 1/2°		J. DISLER	11/18/13
			MFG. ENG.	

UNIT	SP36	6K	230V
APPROVED	Joe M/Bruce	K	11/18/13

WIRING DIAGRAM

KOOLTRONIC, INC.
 HOPWELL, NJ VENTURA, CA USA

CODE IDENT. NO.	SIZE	DWG. NO.	REV
06223	C	WD-1443	A
CAD. REF.	SCALE	NONE	SHEET 1 OF 1