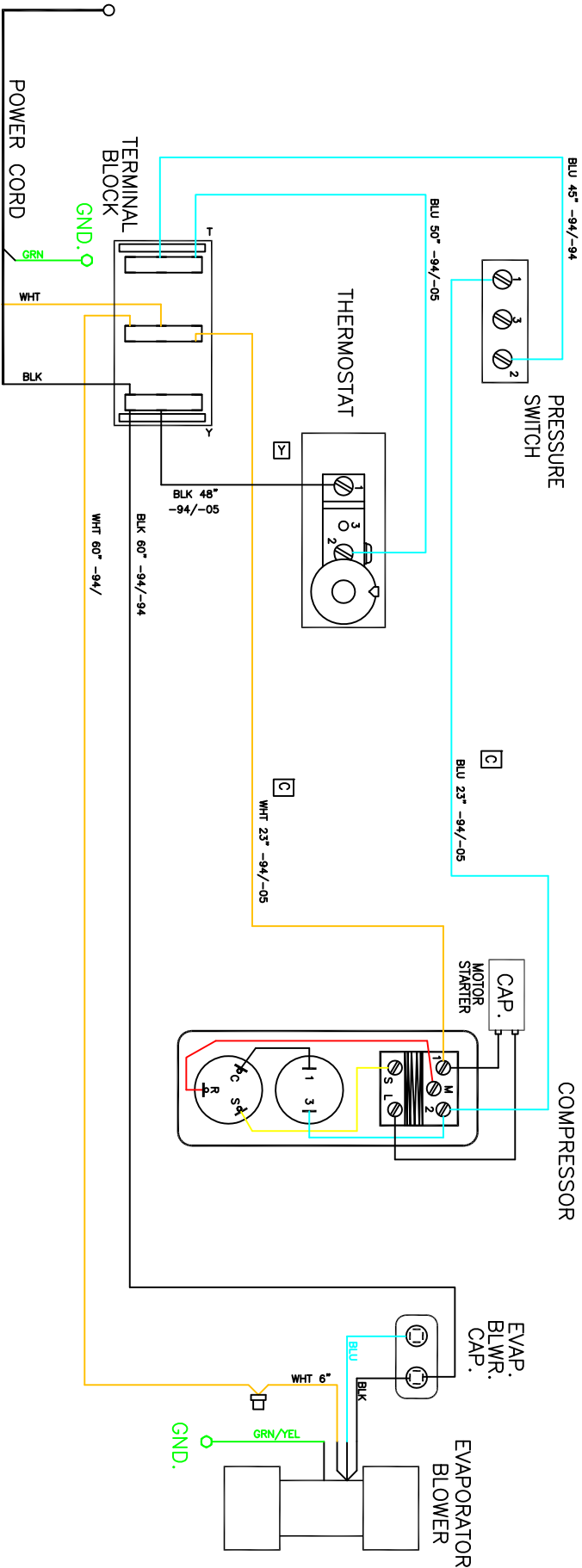


THIS DOCUMENT IS THE PROPERTY OF KOOLTRONIC, INC. AND CONTAINS PROPRIETARY AND CONFIDENTIAL INFORMATION WHICH MUST NOT BE DUPLICATED, USED OR DISCLOSED TO OTHERS, EXCEPT AS EXPRESSLY AUTHORIZED IN WRITING BY KOOLTRONIC, INC.



7 WIRES

REVISIONS				
SYM	NOTICE	DESCRIPTION	DATE	APPROVED
-	EX 99/XXX	NEW DRAWING RELEASE	9/29/98	JMB
A	EC 06/067	ADDED WIRE TERMINATIONS, CHANGE T <sup>+</sup> SIDE WIRES TO BLUE	2/14/05	SOS
B	EC 07/230	BLU 18" COMP WIRE -219/-94 WAS -05/-94 PICTORIALLY REV COMP TO SHOW NEW STYLE	5/6/07	SOS
C	ER 12/046	BLU 23" COMP WIRE WAS 18", WHT 23" COMP WAS 18"	9/10/12	SOS/MB
D	ED 14/170	REMOVED SURGE SUPPRESSOR	6/3/14	LW/

ALL DIMENSIONS ARE IN INCHES. DIMENSIONS DESIGNATED MM ARE IN MILLIMETERS.				
LARGEST DIMENSIONS SPECIFIED		DRAWN	DATE	
TOLERANCES UNLESS OTHERWISE		J. BARNARD	9/29/98	
TOL. ON	INCHES	CHECKED		
XX	± .02	Wyle McCrohan	9/10/12	
XXX	± .010	Boris Muckant	9/10/12	
ANGULAR	± 1/2°	WFO. ENG.		
MATERIAL				
UNIT	K44C4WNPA7	APPROVED	9/11/12	
		Joe H/Bryce K		
SCALE	NONE	CODE IDENT. NO.	06223	
CAD. REF.	W0000300	SIZE	B	
		DWG. NO.	WD-417	
		SHEET	1 OF 1	
		REV	D	
Kooltronic, Inc. ROPERMILL, NJ 07033 VENTURA, CA 94084				
TITLE WIRING DIAGRAM AIR CONDITIONER				